

**2 Bed
House
located in Bermondsey Heights**



Vista heights 227-255
Ilderton Rd
Bermondsey Heights
South Bermondsey
SE15 1PR



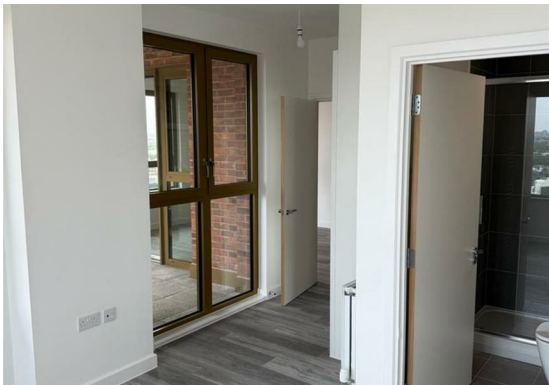
£2,400

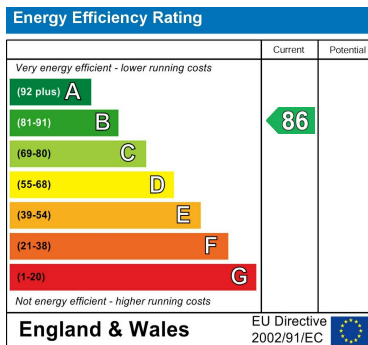
Property features two double bedrooms, including a master suite with en-suite bathroom. Along with an ensuite there is a spacious family-sized bathroom, ideal for shared living.

Bright open-plan living & kitchen, with integrated appliances and sleek finishes, also leading out onto the private balcony offering city views, perfect for morning coffee or unwinding at sunset.

Generous storage, floor-to-ceiling windows, and high-quality flooring throughout along with a attractive and stylish finish.

Only a short walk to South Bermondsey station with fast trains to London Bridge (aprox 5 mins). Nearby Surrey Quays Overground and Canada Water Tube are ideal for easy city commuting providing great transport links.





DIRECTIONS

CONTACT

Meridian House 42 Upper Berkeley Street
London
W1 5PW

E: info@kareestates.co.uk

T: 7831847551

kareestates.co.uk

